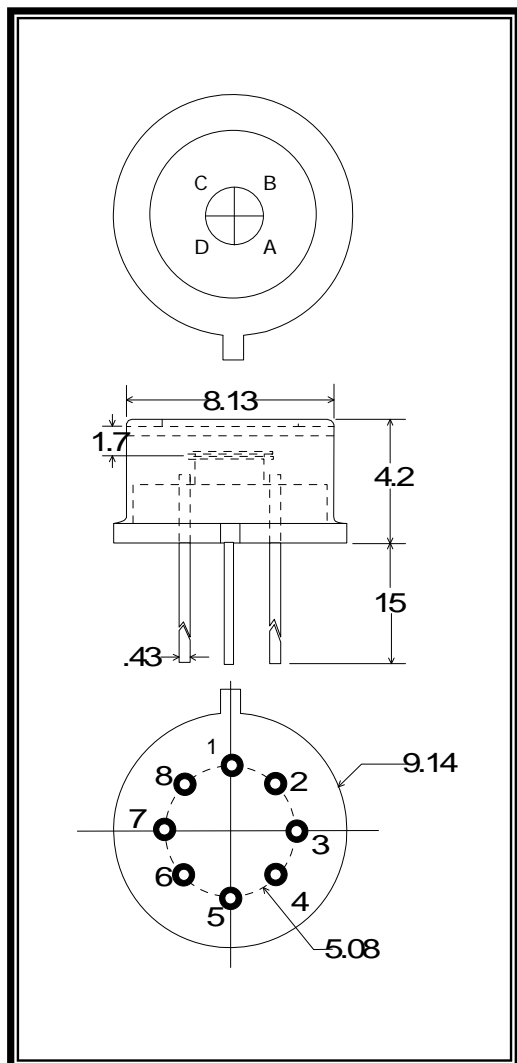


IGA-SERIES QUADRANT POSITION SENSOR PHOTODIODES



TO-5
Top
View

TO-5
Side
View

TO-5
Bottom
View

PIN OUT

- 1 = ANODE D
- 2 = n/c
- 3 = ANODE A
- 4 = CASE
- 5 = ANODE B
- 6 = n/c
- 7 = ANODE C
- 8 = COMMON CATHODE

NOTE: Dimensions in millimeters

Application Note

ELECTRO OPTICAL SYSTEMS offers room temperature position - sensing photodiode detectors. The units have state-of-the-art sensitivity and may be supported by accessories such as optical filters (longpass and bandpass), and preamplifiers. These units find applications in industrial control systems, beam tracking and precision alignment systems.

SPECIFICATIONS @ 23° C

Part Numbers	IGA-010-QD	IGA-020-QD
Detector Type	InGaAs Photodiode	InGaAs photodiode
Active Diameter (mm), Overall	1 mm	2 mm
Operating Wavelength (μm)	1.0 - 1.7	1.0 - 1.7
Shunt Resistance (ohms) (Each Quadrant)	> 100 M	> 60 M
Shunt Capacitance (pF) (Each Quadrant)	40 typ	100 typ
Dark Current (nA) (Each Quadrant)	0.2 typ / 2.0 max	2.0 typ / 10.0 max
Responsivity (A/W)	0.9 min @ 1.3 μm	0.9 min @ 1.3 μm
Element Spacing	< 35 microns	< 100 microns
Crosstalk	< 1%	< 1%