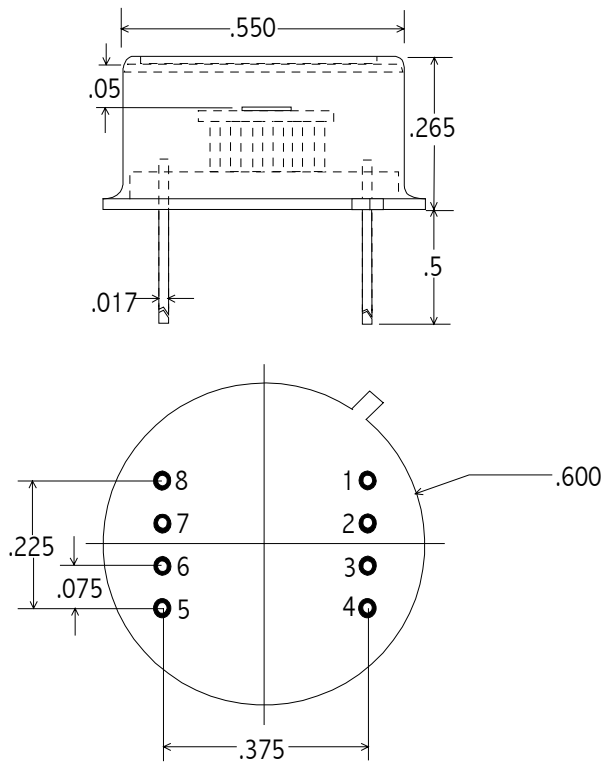


## TO - STYLE PHOTODIODE / AMPLIFIER


**Part no:**
**IGA - 010 - E8**
**PIN OUT**

- 1 = Offset Adj
- 2 = Inv In / Photodiode Cathode
- 3 = N-Inv In / Photodiode Anode
- 4 = -V
- 5 = Gain Select
- 6 = Output
- 7 = +V
- 8 = Offset Adj

**Note:** Dimensions in Inches

**Operating Note** This unit is a high performance photodiode/transimpedance amplifier unit. The output voltage is equal to the optical signal power multiplied by the photodiode responsivity in A/W and the feedback resistance in ohms. The unit is DC-coupled and should be shielded from stray or room lights to avoid saturation of the amplifier.

### SPECIFICATIONS

Operating Temperature (°C)	24
Active Area	1 mm dia
Photodiode Shunt Resistance (MΩ)	100 min
Photodiode Shunt Capacitance (pF)	80. nom
Responsivity @ 1.3 μm (V/W)	$0.9 \times 10^9 / 10^8$ *
NEP (100Hz, 1.3 μm) (W/Hz <sup>1/2</sup> )	$< 1.5 \times 10^{-14}$
Bandwidth (Hz)	DC - 100
Offset Voltage (mV)	< 3.
* <b>Note:</b> Other gain values can be specified	