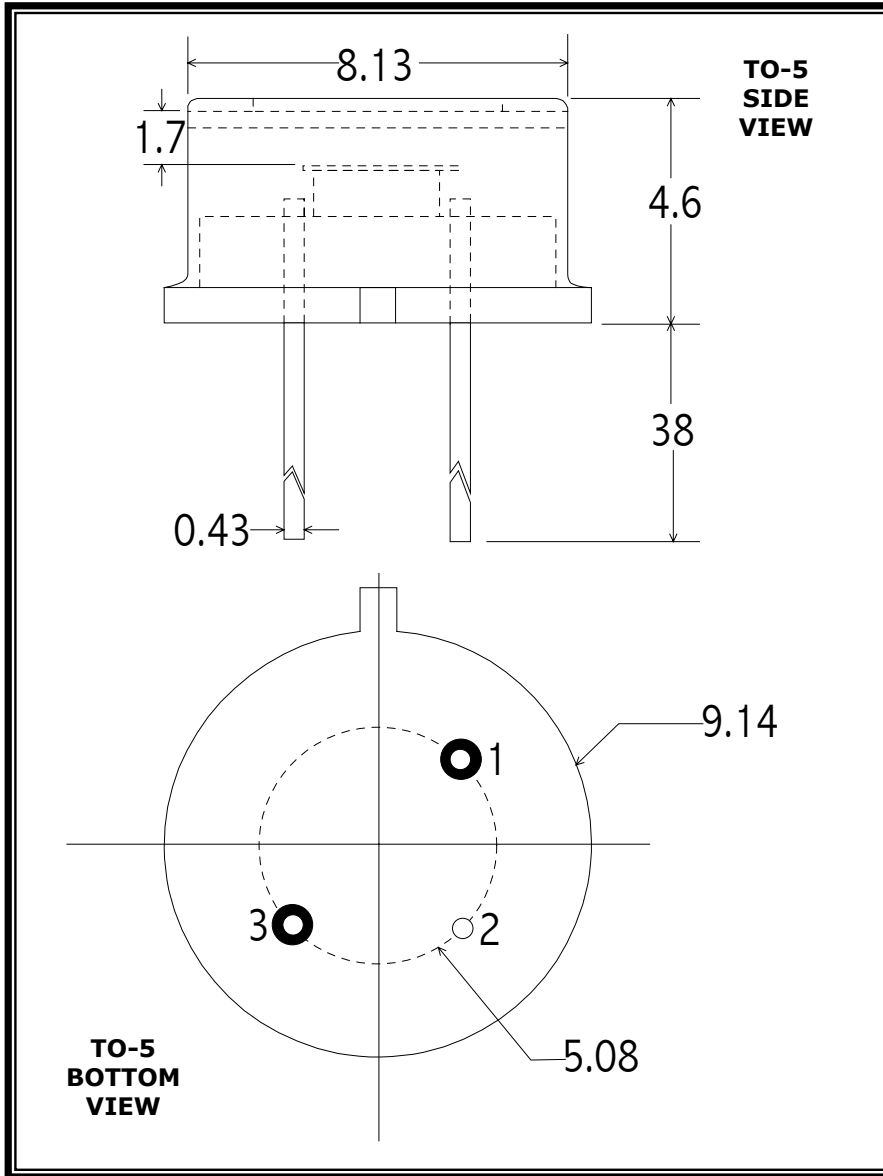


IGA SERIES PHOTODIODE



Part Number:

IGA2.2 - 030

PIN OUT

- 1 = ANODE
- 2 = CASE
- 3 = CATHODE

Note:

Dimensions in millimeters

Application Note

ELECTRO OPTICAL SYSTEMS offers room temperature photodiode detectors. The units have state-of-the-art sensitivity and may be supported by accessories such as optical filters (longpass and bandpass), integral preamplifiers, and fiber optic connectors. These units find applications in industrial control systems, gas analyzers, thermal sensors, and general fiber optic test instrumentation.

SPECIFICATIONS

Active Area	3.0 mm dia
Operating Wavelength - μm	1.2 - 2.6
Shunt Resistance (Ω)	≥ 300
Shunt Capacitance (pF), typ	2000 @ 0V
Responsivity (A/W) @ 2.3 μm	1.1
NEP (W/Hz ^{1/2}), @ 2.3 μm , 100 Hz	$< 7 \times 10^{-12}$