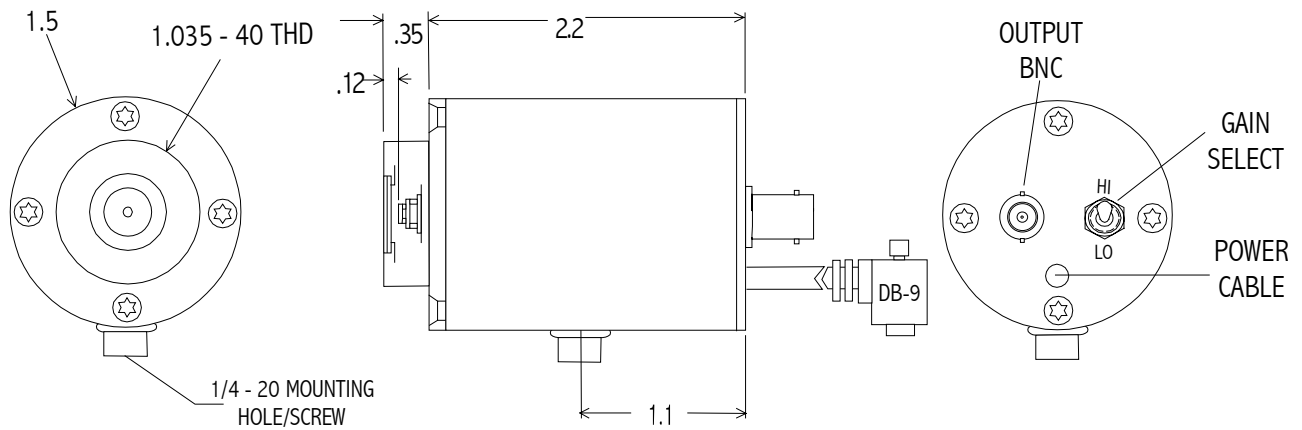
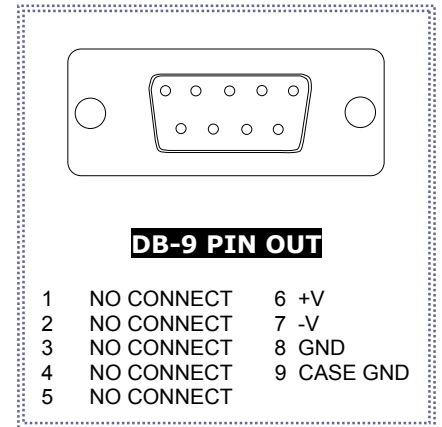
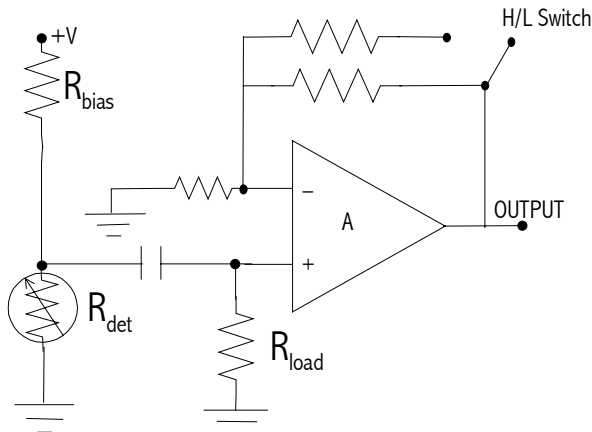


## PBS - SERIES PHOTOCONDUCTOR RECEIVERS



**Application Note** This unit is a high performance photoconductor/receiver operated at ambient temperature with a dual gain voltage amplifier. The detector's bias voltage is linked to the amplifier power supply and no additional biasing is necessary. The PC/AMP is an AC coupled dual gain detector system requiring a modulated input signal for operation.

### SPECIFICATIONS @ 23°C NOM

Part Number	PBS - 020 - H	PBS - 030 - H	PBS - 050 - H	PBS - 060 - H
Active Area	2 mm x 2 mm	3 mm x 3 mm	5 mm x 5 mm	6 mm x 6 mm
Operating Wavelength- $\mu\text{m}$	1.0 - 2.8	1.0 - 2.8	1.0 - 2.8	1.0 - 2.8
Responsivity- V/W @ 2.6	$10^7 / 10^6$	$10^7 / 10^6$	$10^6 / 10^5$	$10^6 / 10^5$
Noise- V/Hz <sup>1/2</sup> @ 400.	$2 \times 10^{-5} / 10^{-6}$	$3 \times 10^{-5} / 10^{-6}$	$7.5 \times 10^{-6} / 10^{-7}$	$7.5 \times 10^{-6} / 10^{-5}$
NEP- W/Hz <sup>1/2</sup> @ 2.6, 400	$< 2 \times 10^{-12}$	$3 \times 10^{-12}$	$6.5 \times 10^{-12}$	$7.5 \times 10^{-12}$
Bandwidth (-3dB)- Hz	5 - 500	5 - 500	5 - 500	5 - 500
Power Requirements	+/- 9 VDC to +/- 15 VDC			
Connections	BNC signal output. Shielded power cable terminated with a DB-9 connector directly couples the unit with the PS -1 Low Noise Power Supply.			