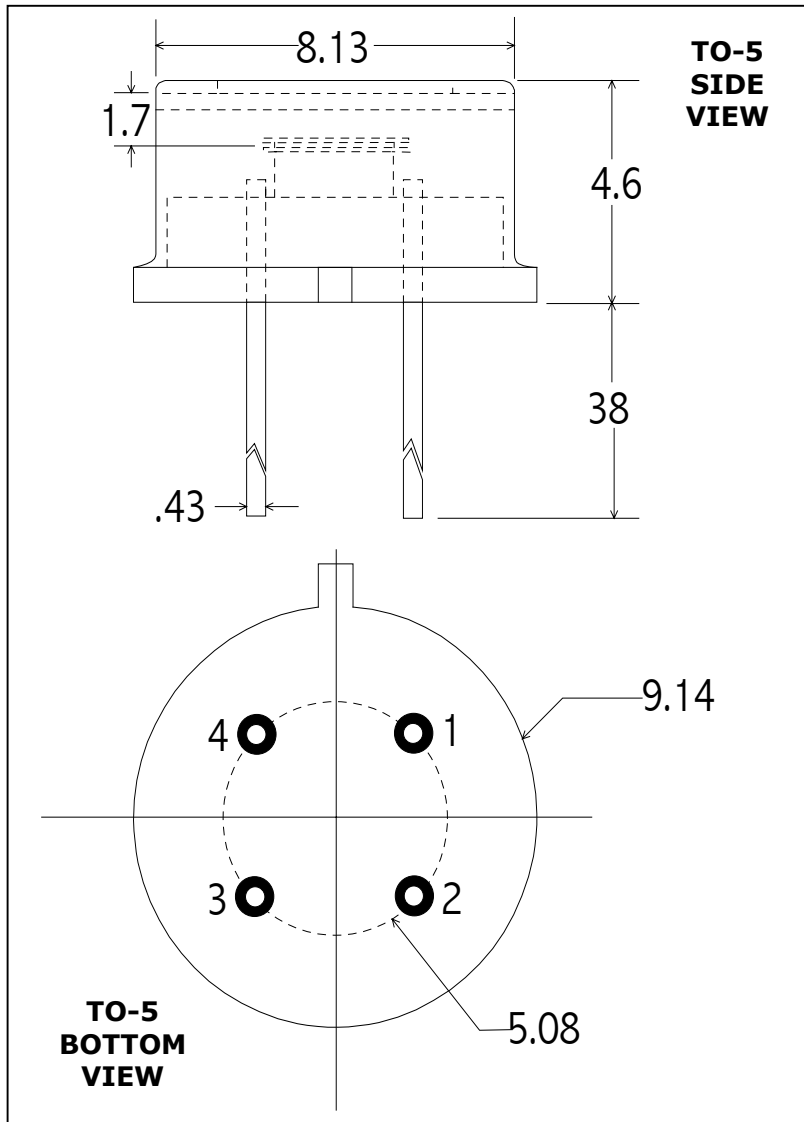


## 2 - COLOR PHOTODETECTOR



**Part No:** UVS/PBS-025/020

**PIN OUT**

- 1 = TOP CATHODE
- 2 = TOP ANODE
- 3 = BOTTOM DETECTOR
- 4 = BOTTOM DETECTOR

**Note:**

Dimensions in millimeters

### Application Note

ELECTRO OPTICAL SYSTEMS offers a variety of room temperature 2-color detectors. The units have state-of-the-art sensitivity and are supported by accessories such as optical filters, integral preamplifiers, and fiber optic connectors.

These units find applications in industrial control systems, test equipment, thermal sensors, and general infrared instrumentation.

### SPECIFICATIONS

| Detector Position          | TOP                              | BOTTOM                          |
|----------------------------|----------------------------------|---------------------------------|
| Detector Type              | UV Si Photodiode                 | PBS Photoconductor              |
| Active Diameter (mm)       | 2.5                              | 2.0 x 2.0                       |
| Operating Wavelength (μm)  | 0.2 – 1.0                        | 1.0 – 2.8                       |
| Shunt Resistance (Ω)       | 200 M min @ 0V                   | 0.5 – 2.0 M                     |
| Shunt Capacitance (pF)     | 300 typ                          | N/A                             |
| Responsivity               | 0.5 A/W @ 850 nm                 | 10 <sup>5</sup> V/W @ 2.6 μm    |
| NEP (W/Hz <sup>1/2</sup> ) | <1.5 x10 <sup>-14</sup> @ 850 nm | < 4 x10 <sup>-12</sup> @ 2.6 μm |